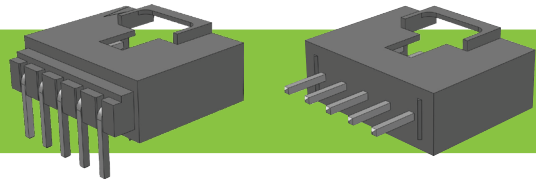


# 2.54mm PCB Connectors



## MPTA Series Latching Straight or Right Angle PCB Headers

### PRODUCT DETAILS

The Flex Connection range of 2.54mm PCB Headers with Latch are ideal for mating with the MHL/MHLH, MHJ/MHJH or MHM/MHMH range of housings. This industry standard range of Latching connectors provide built in polarisation and latching. The connectors are manufactured using Black PBT UL 94 VO insulator and 0.64mm square Gold plated pins as standard. With a Current Rating of 3A these PCB connectors have a temperature range of -25 Deg C to + 85 Deg C.

### FEATURES

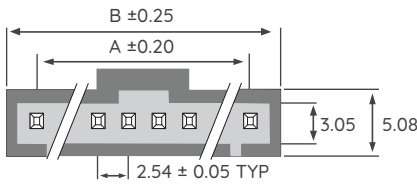


Quality Design

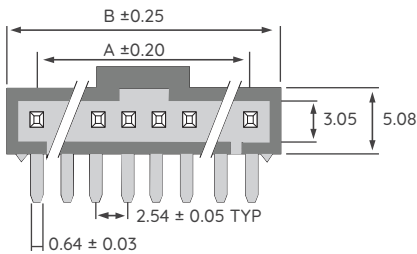
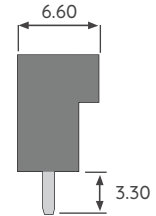
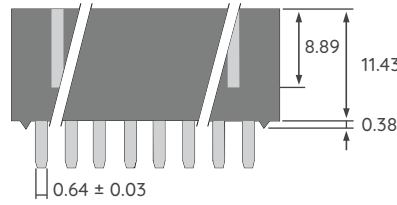


Cost-Effective

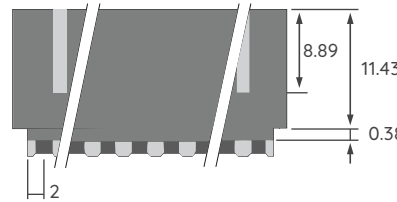
### DIMENSION OUTLINE



#### STRAIGHT (S)



#### RIGHT ANGLE (R)

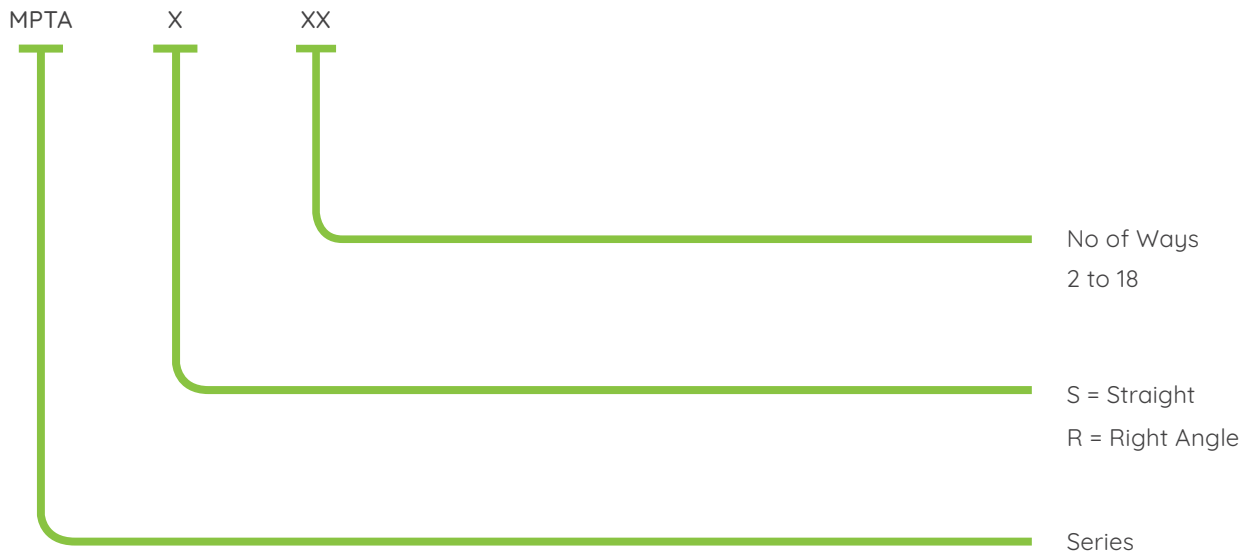


NO. OF WAYS	PART NO.	DIMENSION MM		NO. OF WAYS	PART NO.	DIMENSION MM	
		A	B			A	B
2	MPTA X-02	2.54	7.62	11	MPTA X-11	25.40	30.48
3	MPTA X-03	5.08	10.16	12	MPTA X-12	27.94	33.02
4	MPTA X-04	7.62	12.70	13	MPTA X-13	30.48	35.56
5	MPTA X-05	10.16	15.24	14	MPTA X-14	33.02	38.10
6	MPTA X-06	12.70	17.78	15	MPTA X-15	35.56	40.64
7	MPTA X-07	15.24	20.32	16	MPTA X-16	38.10	43.18
8	MPTA X-08	17.78	22.86	17	MPTA X-17	40.64	45.72
9	MPTA X-09	20.32	25.40	18	MPTA X-18	43.18	48.26
10	MPTA X-10	22.86	27.94				

## ELECTRICAL AND MECHANICAL PROPERTIES

Pitch	2.54mm
Contact Pin	0.64mm Square
Insulator Material	Black PBT UL 94V-O
Mating Housing	MHL/MHLH, MHJ/MHJH, MHM/MHMH Locking Housing
Number of Ways	2 to 18 ways
Plating Options	Gold as Standard
Current Rating	2.5A AC, DC
Withstanding Voltage	600V AC
Temperature Range	-25 Deg C to + 85 Deg C
Insulation Resistance	1000 MΩ

## PART NUMBERING BREAKDOWN



For other numbers of ways please consult your local sales office