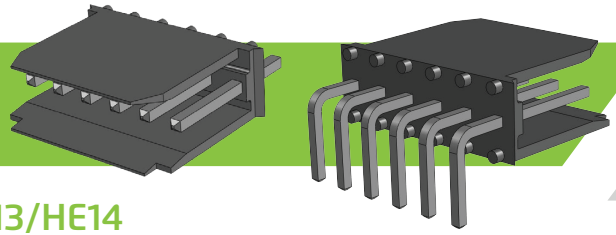


## 2.54mm PCB Connectors



### MPTH Series Straight and Right Angle HE13/HE14 Walled PCB Headers

#### PRODUCT DETAILS

The Flex Connection range of 2.54mm HE13/HE14 PCB Headers are ideal for mating with the MHE range of housings. This industry standard range of connectors provide built in low profile polarisation and latching. The connectors are manufactured using Black Polyester UL 94 VO insulator and 0.64mm square Gold or Tin plated pins are available as standard. With a Current Rating of 3A these PCB connectors have a temperature range of -40 Deg C to + 150 Deg C.

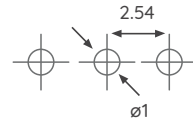
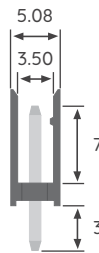
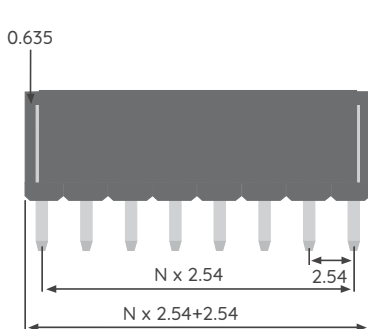
#### FEATURES

 Quality Design

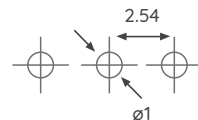
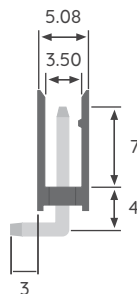
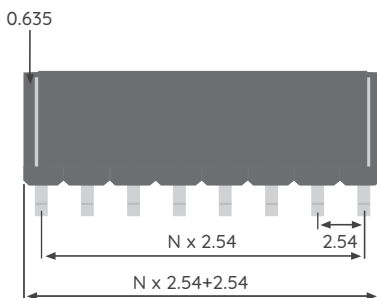
 Cost-Effective

#### DIMENSION OUTLINE

##### SINGLE ROW STRAIGHT



##### SINGLE ROW RIGHT ANGLE



## ELECTRICAL AND MECHANICAL PROPERTIES

Pitch	2.54mm
Contact Pin	0.64mm Square
Insulator Material	Black Polyester UL 94V-O
Mating Housing	MHE Housing
Number of Ways	2 to 25 ways
Plating Options	Tin or Gold
Current Rating	3A AC, DC
Withstanding Voltage	500V AC
Temperature Range	-40 Deg C to + 150 Deg C
Insulation Resistance	1000 MΩ

## PART NUMBERING BREAKDOWN

