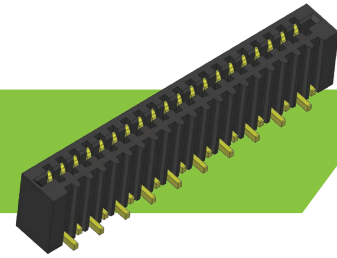


1.00mm FFC/FPC LIF Connector

MF Series 1.00mm Pitch FFC/FPC 2.8mm High LIF Connector



PRODUCT DETAILS

Flex Connection provides a wide range of interconnect solutions utilizing the latest Flexible Flat Cable Technology and FFC/FPC Connectors. We produce standard pitch product from 0.50mm to 2.54mm with SMD and Thru Hole Options including straight and right angle options. Our product specialists will be pleased to discuss with you your individual application requirements and advise an effective solution to meet your specific needs

FEATURES



Light Weight



Extremely Thin



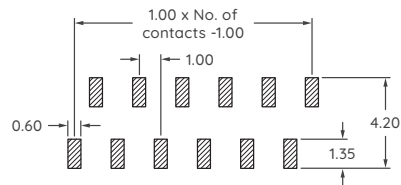
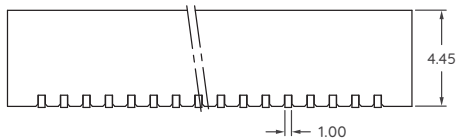
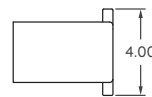
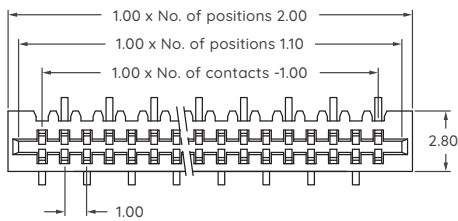
Quality Design



Cost-Effective

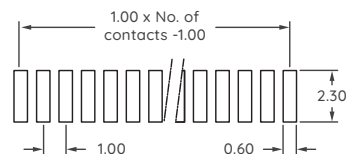
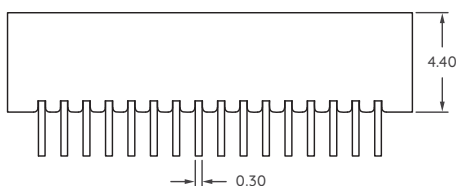
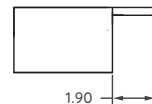
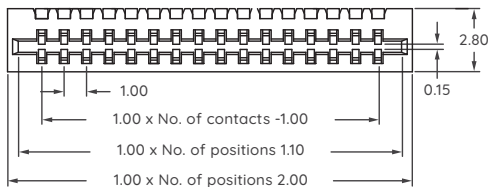
DIMENSION OUTLINE

Dual Contact Straight SMD



RECOMMENDED P.C.B LAYOUT

Dual Contact Right Angle SMD



RECOMMENDED P.C.B LAYOUT

ELECTRICAL AND MECHANICAL PROPERTIES

Pitch	1.00mm
Number of Conductors	4 to 30 Ways
Current Rating	0.5A
Contact Resistance	20 m Ω Max
Insulation Resistance	800 M Ω Min
Withstand Voltage	500V AC/Minute
Operation Temperature	-25°C to 85°C
Contact Material	Phosphor Bronze Tin-Plated over Nickle
Insulator Material	Thermoplastic (UL94V-0) LCP +30% GF

PART NUMBERING BREAKDOWN

